



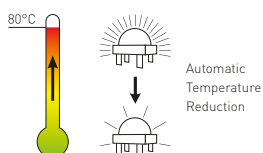
LUCI SERIES EOS² INDUSTRY

Benefits

- Flexible luminaire. Select optic for an ideal lighting solution.
- Easy Installation. Click & Lock surface mounting plate.
- Intelligent output control using integrated Motion (PIR) and Daylight sensor (DLS).
- Self-controlled operating conditions:
 - Luminaire Intelligent Protection System (LIPS).
 - Active Overheat Protection (AOP).
 - Light Normalizer - No Lumen drop during lifetime.
- Integrated EOS technology:
 - Plug-and-play self-organizing wireless network.
 - Encrypted communication.
 - Advised maximum spacing for network: 25 meter.
- Intuitive control and analysis with EOS Manager app:
 - User authentication and data encryption.
 - Visual representation of your EOS network.
 - Extensive configuration, information, and usage statistics.
 - Share sensor information between EOS devices.
- Protected against dust and water intrusions

Features

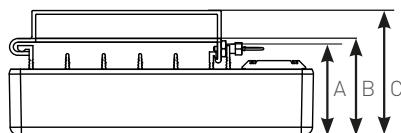
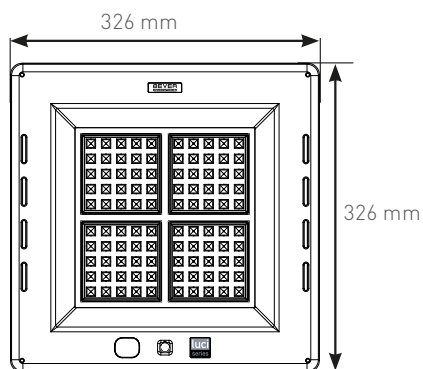
| | |
|------------------------------|--|
| Lumen Output | Up to 19.240 lm |
| Input Power | Up to 180 W |
| Efficacy | Up to 120 lm/W |
| Colour Temperature (CCT) | 4000K |
| Colour Rendering Index (CRI) | 83+ |
| Rated Life | 100.000+ Hours* |
| Daylight Sensor (DLS) | Integrated |
| Motion Sensor (PIR) | Integrated. Range: 7 meter** |
| Housing | PC-ABS white, Anodized Aluminium |
| Optic | PMMA |
| Mounting Options | Surface, Recessed |
| Dimensions | 326 x 326 x 98 mm |
| Operating Temperature | -30 °C to +60 °C*** |
| Connection cable | 1500 mm EPR extra flexibility (-40 °C + 90 °C), UV resistant |
| Ingress Protection | IP67 |
| Voltage | 90 - 305 VAC @ 47 - 63 Hz 127 - 431 VDC |
| Inrush current | 65 A 1,2 ms |
| B-16A fuse | 10 pcs |
| C-16A fuse | 14 pcs |
| Rated Input Current | 120 V - 1.25 A 305 V - 0.54 A |
| Power Factor | 0.97 typical |
| IEC Safety Class | I |
| Weight | 7.2 kg |
| AC Harmonics | Less than 10% THD compliant to EN55015 |



* L80/B10 at 25 °C constant ambient temperature, constant full power.
 ** Detected temperature difference 8 °C @ 1 m/s
 *** Active Overheat Protection above 80 °C at PCB



DIMENSIONS



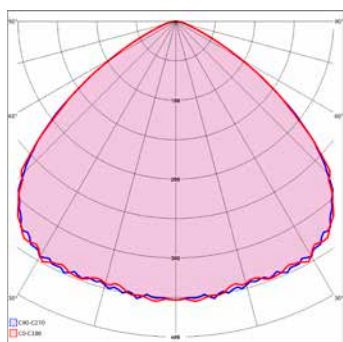
- A recessed* = 98 mm
- B surface mounted = 103 mm (low profile)
- C surface mounted = 133 mm (standard profile)

* Optional recessed brackets available.

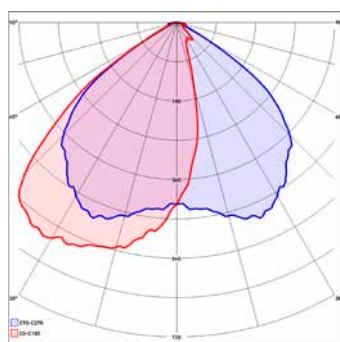
ORDERING INFORMATION

| Article number | Nomenclature | Number of LED's | Optic | Default Power | Default Lumen | Max. Power | Max. Lumen | Max. Efficacy | CCT | CRI |
|-------------------------------|--|-----------------|--------------|---------------|---------------|------------|------------|---------------|-------|-----|
| Luci Series EOS 80 LED | | | | | | | | | | |
| 16765 | Luci02-S-MB01-80LED-N0-180W (EOS, 4000K) | 80 | Symmetrical | 145 W | 15636 lm | 180 W | 18790 lm | 120 lm/W | 4000K | 83+ |
| 16766 | Luci02-A-MB02-80LED-N0-180W (EOS, 4000K) | 80 | Asymmetrical | 145 W | 16074 lm | 180 W | 19240 lm | 119 lm/W | 4000K | 83+ |

OPTICS



Symmetrical



Asymmetrical

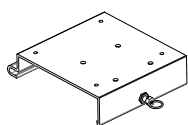
ACCESSOIRES

Surface Mounted

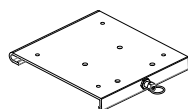
- 13135 High Mounting plate for Surface mounting
- 12996 Low Mounting plate for Surface mounting

Recessed Mounted

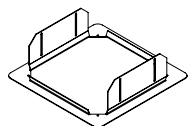
- 13406 Recessed frame for new canopies and retrofit of Philips Mini 300 (hole 360x360 mm)
- 11726 Recessed frame for retrofit of Philips MPF (hole 470x470 mm)
- 13742 Recessed frame for retrofit of Cube (hole 380x380 mm)
- 13746 Recessed frame for retrofit (hole 600x600 mm)
- 13738 Recessed frame for retrofit of Parkersell Canolux (hole 560x410 mm)



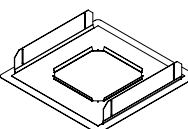
13135 Luci Series + High Mounting Plate = 133 mm high



12996 Luci Series + Low Mounting Plate = 103 mm high



13406 Philips Mini 300 (hole 360x360 mm)



11726 Philips MPF (hole 470x470 mm)

13742 Cube (hole 380x380 mm)

13746 Retrofit (hole 600x600 mm)

13738 Parkersell Canolux (hole 560x410 mm)

COMPLIANCES LUCI SERIES EOS

| | |
|--|---|
| IEC 60598-1 | Luminaires - Part 1: General requirements and tests |
| IEC 60598-2-1 | Luminaires - Part 2-1: Particular requirements - Fixed general purpose luminaires |
| IEC 60598-2-2 | Luminaires - Part 2-2: Particular requirements - Recessed luminaires |
| IEC 62471:2008 | Photobiological safety of lamps and lamp systems |
| EMC directive 2004/108/EC: | |
| - EN 55015:2006 +A1:2007, +A2:2009 | Limits and methods of measurement of radio disturbance of electrical lighting and similar equipment |
| - EN 61000-3-2:2006 +A1:2009, +A2:2009 | Harmonic current emissions |
| - EN 61000-3-3:2008 | Limitation of voltage fluctuations |
| - EN 61547:2009 | Equipment for general lighting purposes. EMC immunity requirements. From which: |
| o EN 61000-4-2:2009 | Electrostatic discharge (ESD) immunity |
| o EN 61000-4-3:2006 +A1:2008, +A2:2010 | Radiated EM field immunity |
| o EN 61000-4-4:2004, +A1:2010 | Electrical fast transient (EFT) immunity |
| o EN 61000-4-5:2006 | Surge transient immunity |
| o EN 61000-4-6:2009 | Conducted Radio-frequency disturbance immunity |
| o EN 61000-4-11:2004 | Immunity to voltage dips and short interrupts. |

All product, product specifications and data are subject to change without notice to improve reliability, function, design or otherwise. Photos and pictures are for illustration purpose only.

Reveb_SPEC_LUCI SERIES EOS² INDUSTRY_GB_2017-10-25