



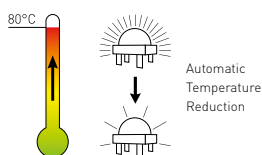
LUCI SERIES EOS² INDUSTRY PIR XL

Benefits

- Flexible luminaire. Select optic for an ideal lighting solution.
- Easy Installation. Click & Lock surface mounting plate.
- Intelligent output control using integrated Motion (PIR) and Daylight sensor (DLS).
- Self-controlled operating conditions:
 - Luminaire Intelligent Protection System (LIPS).
 - Active Overheat Protection (AOP).
 - Light Normalizer - No Lumen drop during lifetime.
- Integrated EOS technology:
 - Plug-and-play self-organizing wireless network.
 - Encrypted communication.
 - Advised maximum spacing for network: 25 meter.
- Intuitive control and analysis with EOS Manager app:
 - User authentication and data encryption.
 - Visual representation of your EOS network.
 - Extensive configuration, information, and usage statistics.
 - Share sensor information between EOS devices.
- Protected against dust and water intrusions

Features

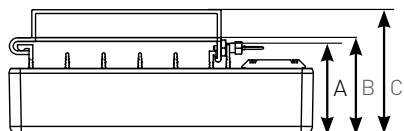
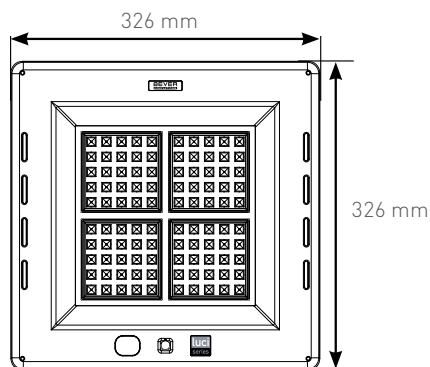
Lumen Output	Up to 19.240 lm
Input Power	Up to 180 W
Efficacy	Up to 120 lm/W
Colour Temperature (CCT)	4000K
Colour Rendering Index (CRI)	83+
Rated Life	100.000+ Hours*
Daylight Sensor (DLS)	Integrated
Motion Sensor (PIR)	Integrated. Range: 15 meter
Housing	PC-ABS white, Anodized Aluminium
Optic	PMMA
Mounting Options	Surface, Recessed
Dimensions	326 x 326 x 98 mm
Operating Temperature	-30 °C to +60 °C***
Connection cable	1500 mm EPR extra flexibility (-40 °C + 90 °C), UV resistant
Ingress Protection	IP67
Voltage	90 - 305 VAC @ 47 - 63 Hz 127 - 431 VDC
Inrush current	65 A 1,2 ms
B-16A fuse	10 pcs
C-16A fuse	14 pcs
Rated Input Current	120 V - 1.25 A 305 V - 0.54 A
Power Factor	0.97 typical
IEC Safety Class	I
Weight	7.2 kg
AC Harmonics	Less than 10% THD compliant to EN55015



* L80/B10 at 25 °C constant ambient temperature, constant full power.
 ** Detected temperature difference 6 °C @ 1 m/s
 *** Active Overheat Protection above 80 °C at PCB



DIMENSIONS



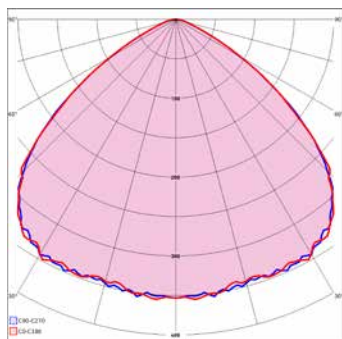
- A recessed* = 98 mm
- B surface mounted = 103 mm (low profile)
- C surface mounted = 133 mm (standard profile)

* Optional recessed brackets available.

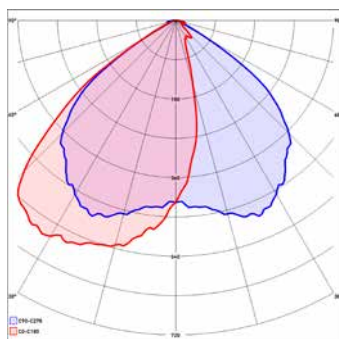
ORDER INFORMATION

Article number	Nomenclature	Number of LED's	Optic	Default Power	Default Lumen	Max. Power	Max. Lumen	Max. Efficacy	CCT	CRI
Luci Series EOS 80 LED PIR XL										
16767	Luci02-S-MB01-80LED-N0-180W (EOS ² , 4000K, PIRXL)	80	Symmetrical	145 W	15636 lm	180 W	18.790 lm	120 lm/W	4000K	83+
16768	Luci02-A-MB02-80LED-N0-180W (EOS ² , 4000K, PIRXL)	80	Asymmetrical	145 W	16074 lm	180 W	19.240 lm	119 lm/W	4000K	83+
16769	Luci02-S-RB01-80LED-N0-180W (EOS ² , 4000K, PIRXL)	80	Rectangular	145 W	15369 lm	180 W	18.469 lm	112 lm/W	4000K	83+

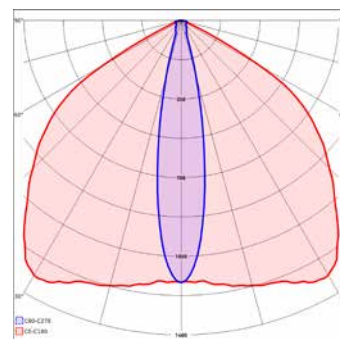
OPTICS



Symmetrical



Asymmetrical



Rectangular

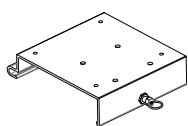
ACCESSOIRES

Surface Mounted

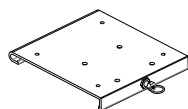
- 13135 High Mounting plate for Surface mounting
- 12996 Low Mounting plate for Surface mounting

Recessed Mounted

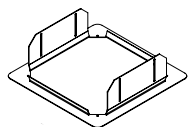
- 13406 Recessed frame for new canopies and retrofit of Philips Mini 300 (hole 360x360 mm)
- 11726 Recessed frame for retrofit of Philips MPF (hole 470x470 mm)
- 13742 Recessed frame for retrofit of Cube (hole 380x380 mm)
- 13746 Recessed frame for retrofit (hole 600x600 mm)
- 13738 Recessed frame for retrofit of Parkersell Canolux (hole 560x410 mm)



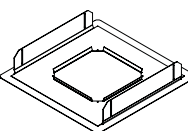
13135 Luci Series + High Mounting Plate = 133 mm high



12996 Luci Series + Low Mounting Plate = 103 mm high



13406 Philips Mini 300 (hole 360x360 mm)



11726 Philips MPF (hole 470x470 mm)

13742 Cube (hole 380x380 mm)

13746 Retrofit (hole 600x600 mm)

13738 Parkersell Canolux (hole 560x410 mm)

COMPLIANCES LUCI SERIES EOS

IEC 60598-1	Luminaires - Part 1: General requirements and tests
IEC 60598-2-1	Luminaires - Part 2-1: Particular requirements - Fixed general purpose luminaires
IEC 60598-2-2	Luminaires - Part 2-2: Particular requirements - Recessed luminaires
IEC 62471:2008	Photobiological safety of lamps and lamp systems
EMC directive 2004/108/EC:	
- EN 55015:2006 +A1:2007, +A2:2009	Limits and methods of measurement of radio disturbance of electrical lighting and similar equipment
- EN 61000-3-2:2006 +A1:2009, +A2:2009	Harmonic current emissions
- EN 61000-3-3:2008	Limitation of voltage fluctuations
- EN 61547:2009	Equipment for general lighting purposes. EMC immunity requirements. From which:
o EN 61000-4-2:2009	Electrostatic discharge (ESD) immunity
o EN 61000-4-3:2006 +A1:2008, +A2:2010	Radiated EM field immunity
o EN 61000-4-4:2004, +A1:2010	Electrical fast transient (EFT) immunity
o EN 61000-4-5:2006	Surge transient immunity
o EN 61000-4-6:2009	Conducted Radio-frequency disturbance immunity
o EN 61000-4-11:2004	Immunity to voltage dips and short interrupts.

All product, product specifications and data are subject to change without notice to improve reliability, function, design or otherwise. Photos and pictures are for illustration purpose only.

Reveb_SPEC_LUCI SERIES EOS² INDUSTRY PIR XL_GB_2017-12-06

